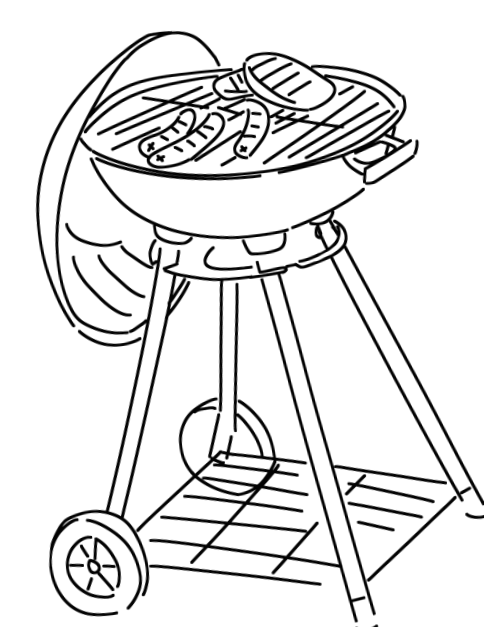


# Phoenix Meadows

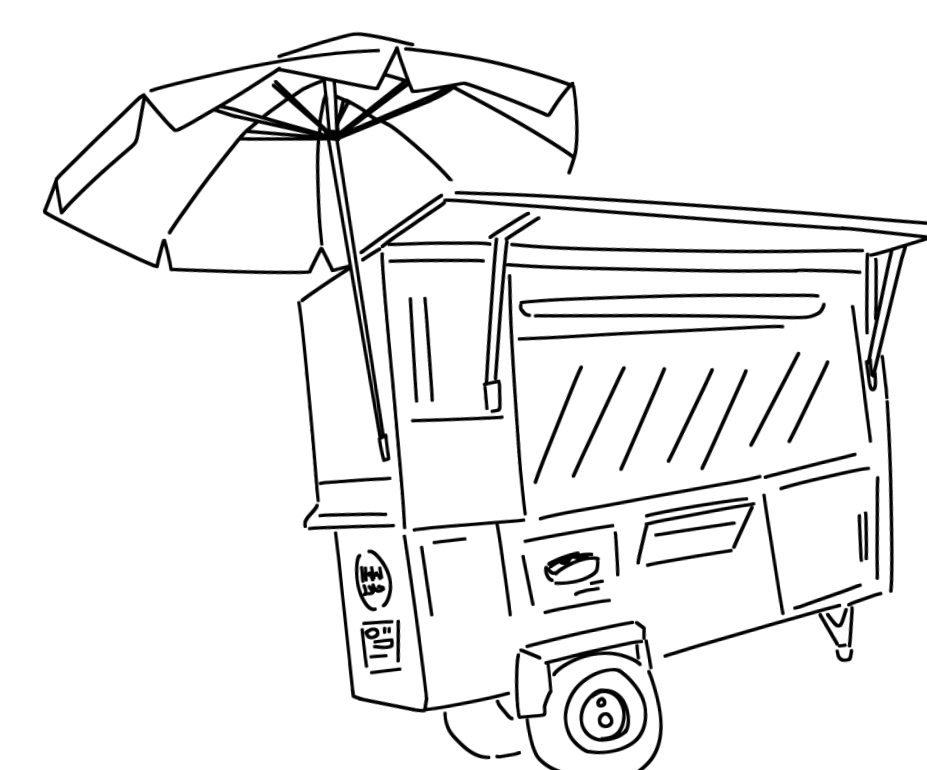
uniting  
our  
communities



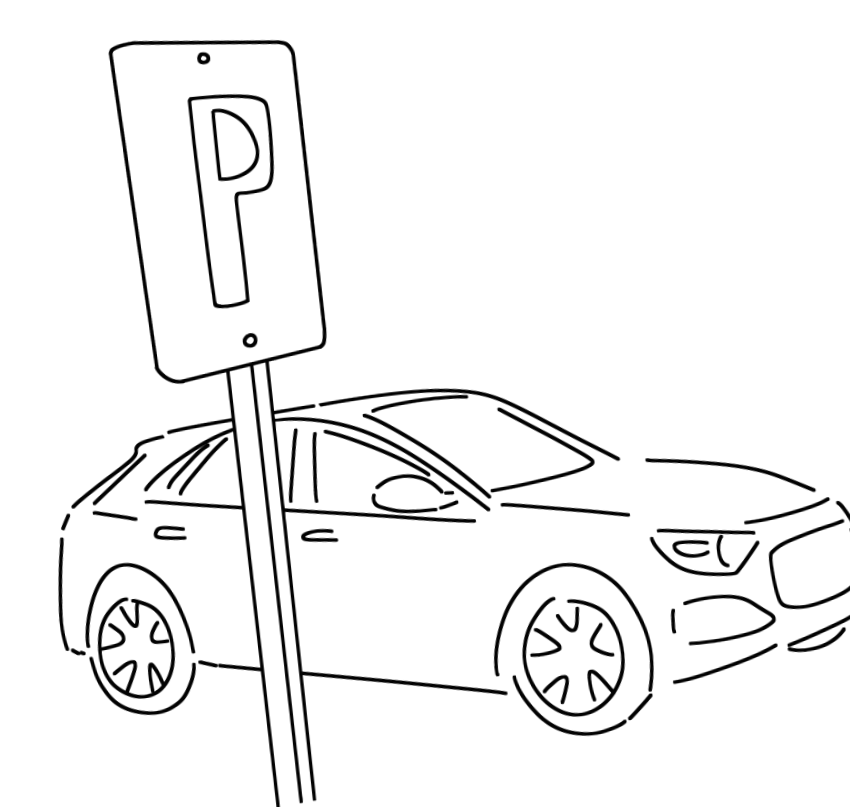
1 flood-proof green space



2 tailgating & barbecue



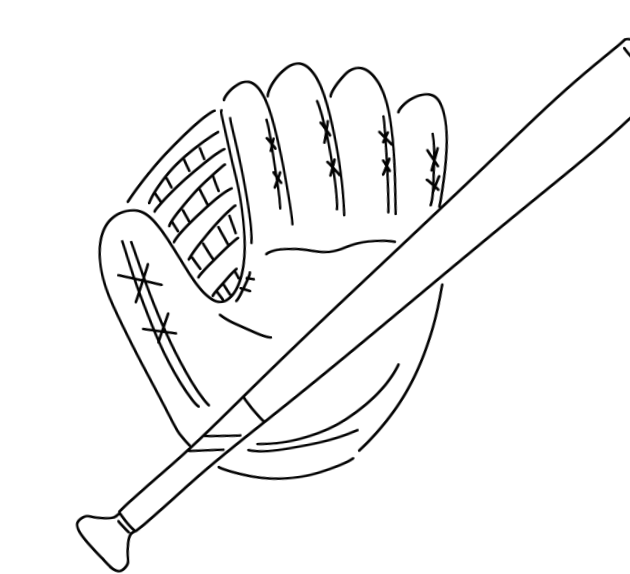
3 food vendor



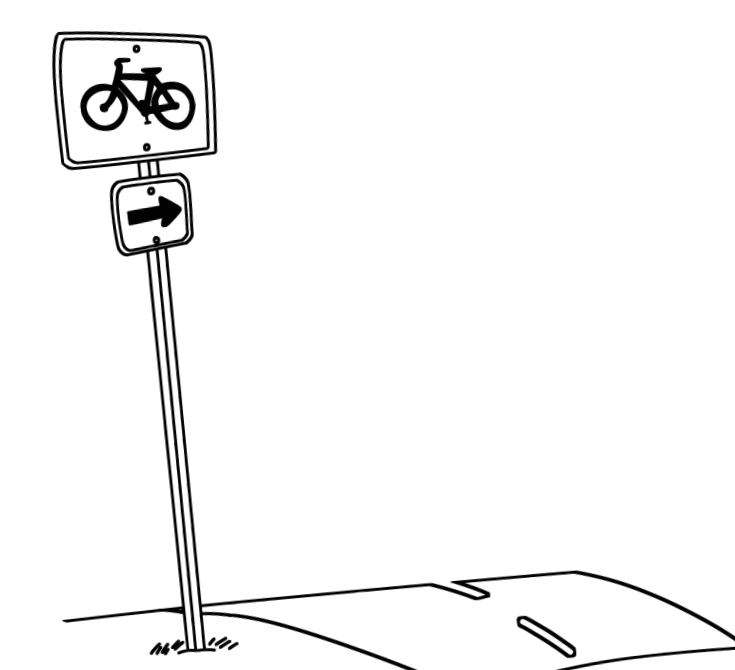
4 vertical parking



5 flood-proof pond



6 recreation and sports



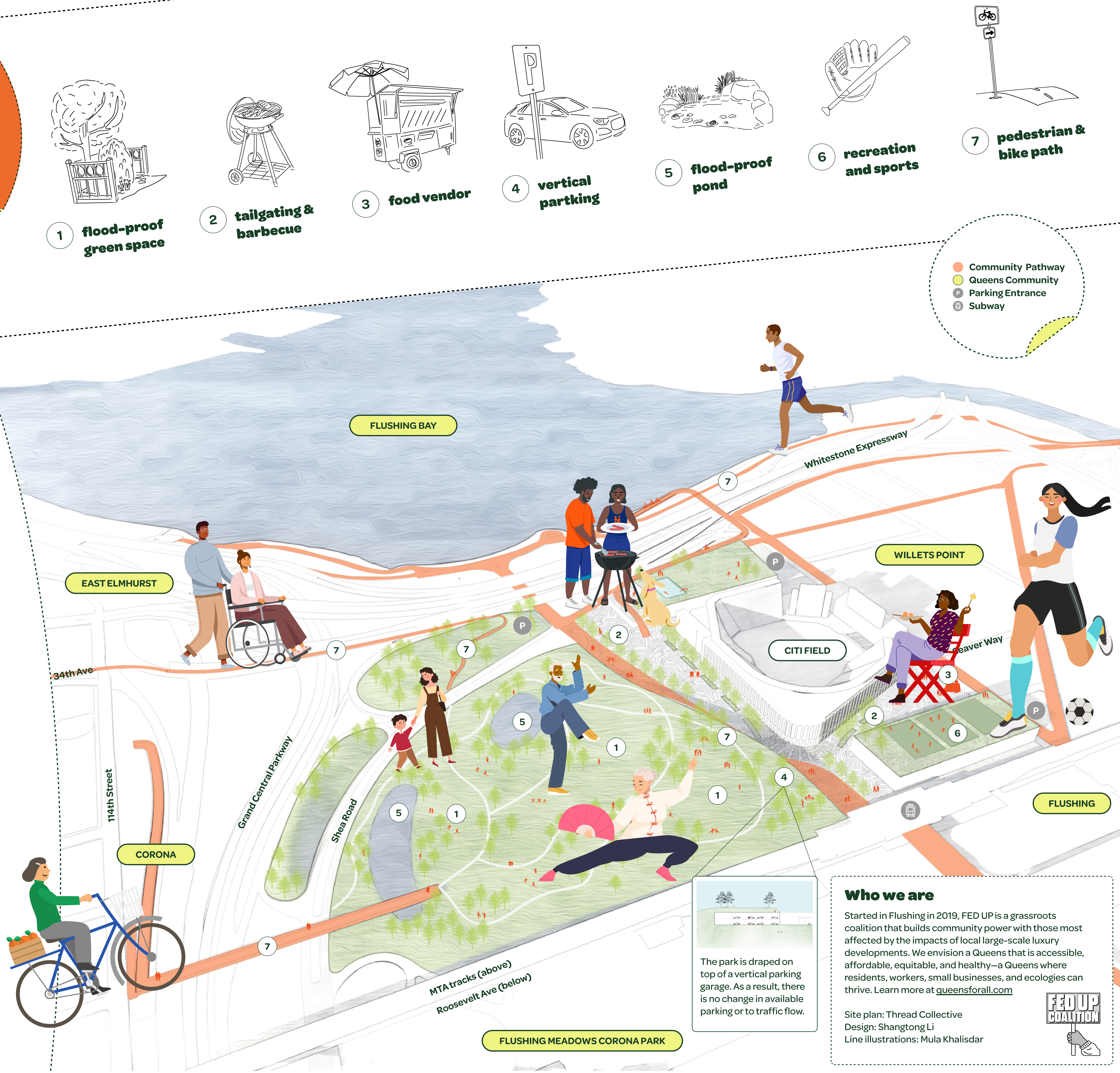
7 pedestrian & bike path

- Community Pathway
- Queens Community
- P Parking Entrance
- M Subway

**Public land is meant for the public.** Queens Future LLC's 'Metropolitan Park' project gifts over 65 acres of public parkland to a private developer to build a casino. We believe New Yorkers deserve better.

Phoenix Meadows envisions a future where Citi Field's parkland is properly funded and kept public. Located on the site of a former coal ash dump, Phoenix Meadows rises from the ashes to unite our communities

Any plan needs to include all the communities around Citi Field in a robust and inclusive planning process. We are calling on our elected officials and the City to leverage the millions of dollars in resilience planning available at the Federal and State level to help advance a community-centered process and vision.



The park is draped on top of a vertical parking garage. As a result, there is no change in available parking or to traffic flow.

**Who we are**  
 Started in Flushing in 2019, FED UP is a grassroots coalition that builds community power with those most affected by the impacts of local large-scale luxury developments. We envision a Queens that is accessible, affordable, equitable, and healthy—a Queens where residents, workers, small businesses, and ecologies can thrive. Learn more at [queensforall.com](http://queensforall.com)

Site plan: Thread Collective  
 Design: Shangtong Li  
 Line illustrations: Mula Khalisdar

